

HTC2

Series model

Lifting Column



Product Categories

1. Industrial application
2. Furniture application
3. Office applications
4. Medical applications

HT-C2 Lifting Columns are designed for a variety of workstation applications such as office desks, workstations, assembly stations, medical instruments, lifting platforms, and kitchen height adjustments, furniture, boat, touring car, etc. We offer control unit for 100% synchronization function to achieve 2/3/4/6 columns working up and down at same time. It is a very powerful design and full-featured model in our company with good comments from world customers.

Product Features

Voltage:	12V DC, 24V DC
Stroke:	30mm-800mm
The maximum load capacity:	6000N
Installation dimensions:	Stroke + 150mm Stroke + 180mm(Stroke >500 MM)
Color:	Silver
Safety Certification:	Compliance with ISO9001-2008 standard, CE and RoHS
Operating temperature range:	+ 5 ° C ~ + 45 ° C, -25 ° C ~ + 65 ° C
Low noise:	48dB
Limit switch:	Built-in limit switch at both ends, not adjustable
Power access mode for controller	External controller, with extra power box and pad
Other options:	1. Hall effect sensor 2. Synchronized control unit (one controller for 2, 3, 4, 6 columns)

Remark:

1. Need vertical lifting for heavy loads.
2. Avoid shaking during working.

Load and Speed

Code	Rated Load	Rated Load	Self-locking Force	Rated Current	Rated Speed No load	Rated Speed Full load
	Push N	Pull N	Static/Dynamic N	24V DC A	24V DC mm/s	24V DC mm/s

Motor voltage (24V DC)

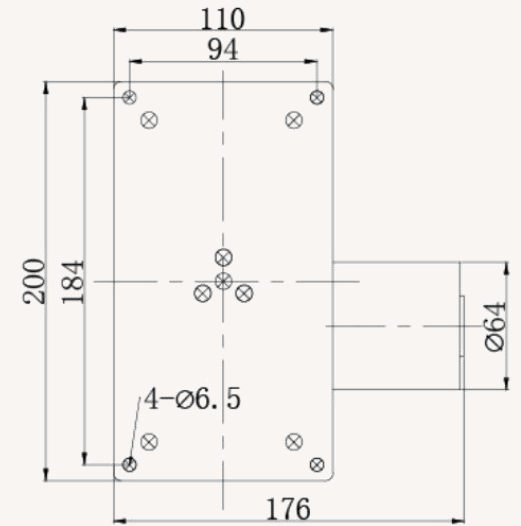
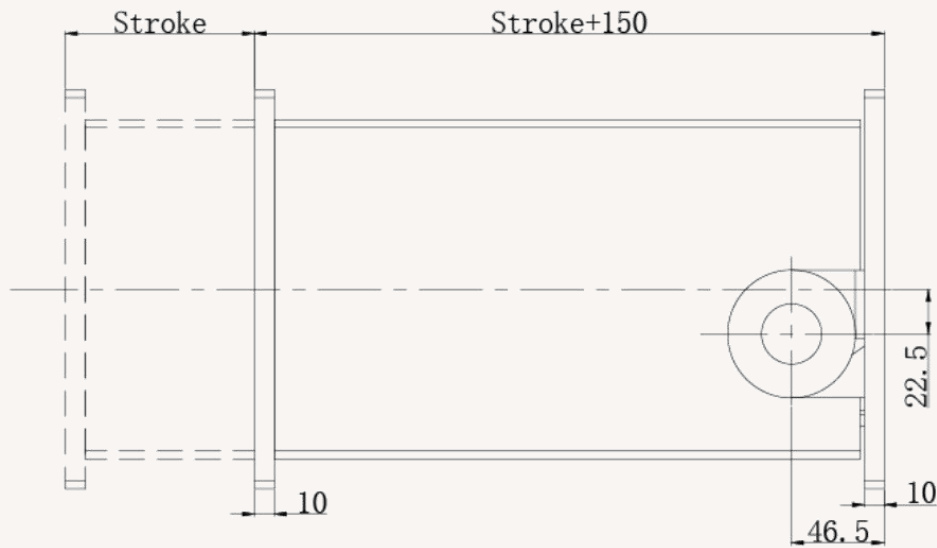
A	6000	2000	6000	3.5	05	04
B	4000	2000	4000	3.5	10	06
C	2000	1000	2000	3.5	22	12
D	1000	500	1000	3.5	30	20
E	500	200	500	3.5	42	30

Remark

1. 12V motor speed of about the same current of about 2 times.
2. take the self-locking force with the same information.

Series model
HT-C2

Drawings
Standard size
(mm)



HT-C2 Model selection code table

HT-C2

<input type="checkbox"/>	Voltage	12=12V DC	24=12V DC		
<input type="checkbox"/>	Stroke (mm)				
<input type="checkbox"/>	Installation Size (mm)	Note: Before selecting dimensions, please refer invalid schedule Refer to page 4			
<input type="checkbox"/>	Speed (mm/s)	Refer to page 3			
<input type="checkbox"/>	Load (n)	Refer to page 3			
<input type="checkbox"/>	Upper type	1 = Small fixing plate, see page 5	2 = Large fixed plate, see page 5		
	Lower type	3 = Small mounting plate, see page 5	4 = Large fixed plate, see page 5		
	Outgoing line type	1= Lower outlet, side outlet, see page 5	2= upper outlet, side outlet, see page 5		
<input type="checkbox"/>	plug	A=national standard	B=European standar	C=American Standa	D = Customized
<input type="checkbox"/>	Cable length	1 = straight 300mm	2 = straight 600mm	3 = straight1000mm	4 = customized
<input type="checkbox"/>	Example: Voltage: 12V DC, stroke 100MM. conventional installation stroke 100MM + original size 150. speed 08MM / S, load 4000N, Code: HTC2-12-100-250/350-10-4000N-1-A-1				

Terms of Use

Geming user's responsibility to determine the suitability of a particular product licensing applications. However, continued research and development process to improve its product performance, Geming brand products without prior notice and may be modified or changed. Therefore, Geming can not guarantee some information within the publication of its product catalog to maintain the most accurate and authentic state. Geming retention stop on sales of the company website, product directory, Terms of Use or the powers of any other written information on the product listed.